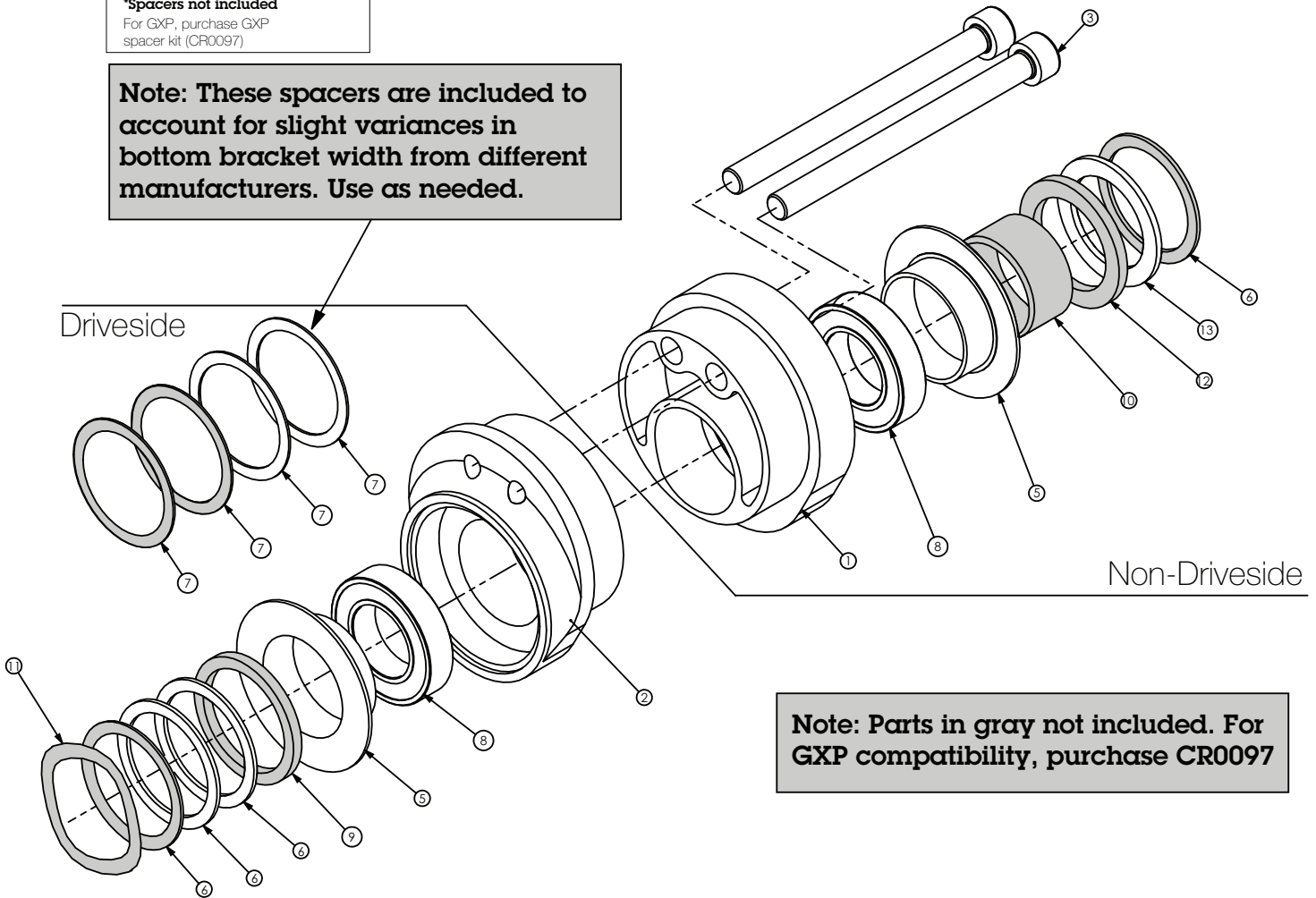


Assembly Instruction Guide									
ITEM NO.	DESCRIPTION	73 mm, 24 mm Spindle (Std. mountain, Shimano type)		68 mm, 24 mm Spindle (Std. road, Shimano Type)		73 mm, 24 mm Spindle (Std. mountain, GXP Type)		68 mm, 24 mm Spindle (Std. road, GXP Type)	
		Driveside	Non-driveside	Driveside	Non-driveside	Driveside	Non-driveside	Driveside	Non-driveside
1	E46, Non-driveside		1		1		1		1
2	E46, Driveside	1		1		1		1	
3	M6x1.0 75L Bolt		2		2		2		2
5	Andel BB Dust Cap	1	1	1	1	1	1	1	1
6	1mm Spacer	2		1	1	4		4	
7	0.5mm Spacer	1							
8	Cartridge Bearing	1	1	1	1	1	1	1	1
9*	2.5mm Spacer								
10*	GXP Type Spacer						1		1
11*	Wavy Washer					1		1	
12*	2.5mm GXP Spacer								1
13*	1.5mm GXP Spacer						1		

\*Spacers not included  
For GXP, purchase GXP spacer kit (CR0097)

**Note: These spacers are included to account for slight variances in bottom bracket width from different manufacturers. Use as needed.**



**Note: Parts in gray not included. For GXP compatibility, purchase CR0097**

The Eccentric 46 bottom bracket uses cranks with 24mm OD spindles to convert frames with 46mm ID bottom brackets and vertical dropouts for singlespeed use. Double check that you've got what you need:

- The Problem Solvers E46 Bottom Bracket
- Compatible cranks: the E46 is compatible with road and mountain FSA MegaExo, Race Face X-Type, and Shimano Hollowtech II external bottom bracket cranks (with appropriate spacers)
- A frame with a 46mm inside diameter bottom bracket shell (designed for use with PressFit 30 bottom brackets)

**Note:** Due to the wide variety in frame manufacturers, Problem Solvers cannot guarantee compatibility with all frames. Consult your frame manufacturer. Problem Solvers is not responsible for damage done to your frame as a result of using this product

**WARNING:** Read these instructions completely before beginning installation of this product. If you lack the knowledge or tools to perform installation, please have your local professional bicycle mechanic perform the installation. Improper installation can result in loss of control or damage to the bicycle and/or serious injury or death to the rider.

**TOOLS:**

- Bicycle grease
- 5mm hex wrench
- Torque wrench
- Mallet (optional)

**INSTALLATION:**

- Thoroughly clean your bottom bracket shell and apply a thin layer of grease
- Install the drive-side E46 cup (Figure 1)
- Install the non-drive-side cup and thread in the bolts
- Position the bottom bracket so the spindle holes are as far rearward as possible and snug the bolts so that the cups are flush with the frame, but don't tighten them fully (Figure 2)
- Insert the drive-side crankarm and spacers for your system (see the diagram on page 1). You may want to use a rubber mallet to tap it flush (Figure 3-4)
- Install the non-drive side crankarm and spacers (see diagram on page one) per manufacturer specifications (Figure 5)
- With the rear wheel and chain installed, rotate the E46 forward until desired chain tension is reached (Figure 6-7)
- Tighten the non-drive-side E46 bolts 15–18 Nm (Figure 8)

**LIMITED 2-YEAR WARRANTY**

This Problem Solvers product is warranted against defects in materials and workmanship for two (2) years, from the original date of retail purchase by the consumer, subject to the limitations detailed below. This limited warranty is expressly limited to the repair or replacement of the original product, at the option of Problem Solvers, and is the sole remedy of the warranty. This limited warranty applies only to the original purchaser of the Problem Solvers product and is not transferable. In no event shall Problem Solvers be liable for any loss, inconvenience or damage, whether direct, incidental or consequential or otherwise resulting from breach of any express or implied warranty or condition, of merchantability, fitness for a particular purpose, or otherwise with respect to this product except as set forth herein.

This warranty does not cover the following:

- Damage due to improper assembly or follow-up maintenance or lack of skill, competence or experience of the user
- Products that have been modified, neglected, used in competition or for commercial purposes, misused or abused, involved in accidents or anything other than normal use
- Damage or deterioration to the surface finish, aesthetics or appearance of the product
- Normal wear and tear
- Labor required to remove and/or refit and re-adjust the product within the bicycle assembly

This warranty gives the consumer specific legal rights, and those rights and other rights may vary from state to state.



Figure 1



Figure 2



Figure 3



Figure 4



Figure 5



Figure 6



Figure 7



Figure 8